

**Membership Application of  
The Archaeological Society of Ohio**

Name: \_\_\_\_\_  
          First          Middle Initial          Last

Additional voting family member: \_\_\_\_\_

Street: \_\_\_\_\_

City: \_\_\_\_\_ State: \_\_\_\_\_ Zip: \_\_\_\_\_

E-mail address: \_\_\_\_\_

Referred by: \_\_\_\_\_

Member may join at any time during the year, and will receive all four issues of *The Ohio Archaeologist* for the current year as they become available. All renewal memberships for the coming year should be paid by December 31. Add a voting family member at no additional cost (only one subscription to *The Ohio Archaeologist* per paid membership). Additional membership cards for children are available through the Business Manager. Make check or money order payable to The Archaeological Society of Ohio and send with this application at the address below, or apply and pay online at OhioArch.org. For questions, call 1-800-736-7815.

Regular membership: \$40  
Individual Life Membership: \$750  
Donations welcome.

Business Manager  
1166 E Dayton-Yellow Springs rd  
Suite 269  
Fairborn, Oh 45324

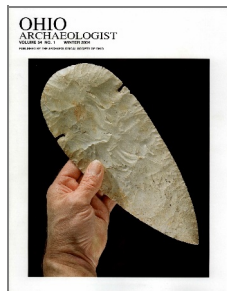


**We invite you to join ....**



**The  
ARCHAEOLOGICAL  
SOCIETY OF OHIO**

The Archaeological Society of Ohio (ASO), founded in 1941, is the oldest and largest archaeological society in the United States. The Society was organized to discover and conserve archaeological sites and material in Ohio, to seek and promote a better understanding among students and collectors of archaeological material, both professional and non-professional, and to disseminate knowledge on the subject of archaeology. Our membership is made up of people from all walks of life, from every state in the nation, many foreign countries, and includes libraries, historical societies, colleges and universities.

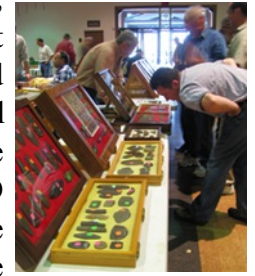


Membership includes subscription to *The Ohio Archaeologist*, which is published quarterly. This journal has been recognized as one of the finest in its field. Well-illustrated articles by professionals, non-professionals, and artifact collectors cover a wide variety of subjects. Some of the most important archaeological sites in the eastern United States have been

published in *The Ohio Archaeologist*. Many outstanding prehistoric artifacts and collections are pictured in color. Book reviews, meeting announcements, and thought-provoking editorials are regular features.

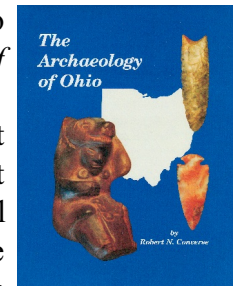
The Archaeological Society of Ohio holds regular state meetings in Columbus in January, March, May, and November. At state meetings, members display their collections and site

material, listen and interact with speakers, and are provided an opportunity to meet and learn from fellow members and collectors. Beginning with our successful and highly acclaimed “Peopling of the Americas” symposium in 2002, the ASO hosts a biennial archaeological conference in Columbus, Ohio. This is a rare opportunity to hear and interact with some of the most well known, diverse, and knowledgeable archaeologists and archaeological researchers in the county.



Chapters of the ASO meet locally at more than 25 locations around Ohio. The chapters, which usually meet once a month, provide a forum for members in their own local area to become acquainted and participate in archaeological projects. Outdoor summer picnic meetings are hosted by many chapters at various Ohio locations. Local chapters and contact information is provided on our website at [OhioArch.org](http://OhioArch.org).

The Society offers books on Ohio archaeology including *The Archaeology of Ohio*, *Ohio Flint Types*, *Ohio Stone Tools*, and *The Glacial Kame Indians*, all by Robert N. Converse. These are among the most widely read and cited archaeological publications in the United States. They are available along with past issues of *The Ohio Archaeologist* at our shows and at the Society’s website.



If you are interested in the rich archaeological heritage of Ohio and surrounding areas, we invite you to join The Archaeological Society of Ohio. To join, complete and mail the membership application with dues, or apply and pay online at [OhioArch.org](http://OhioArch.org).